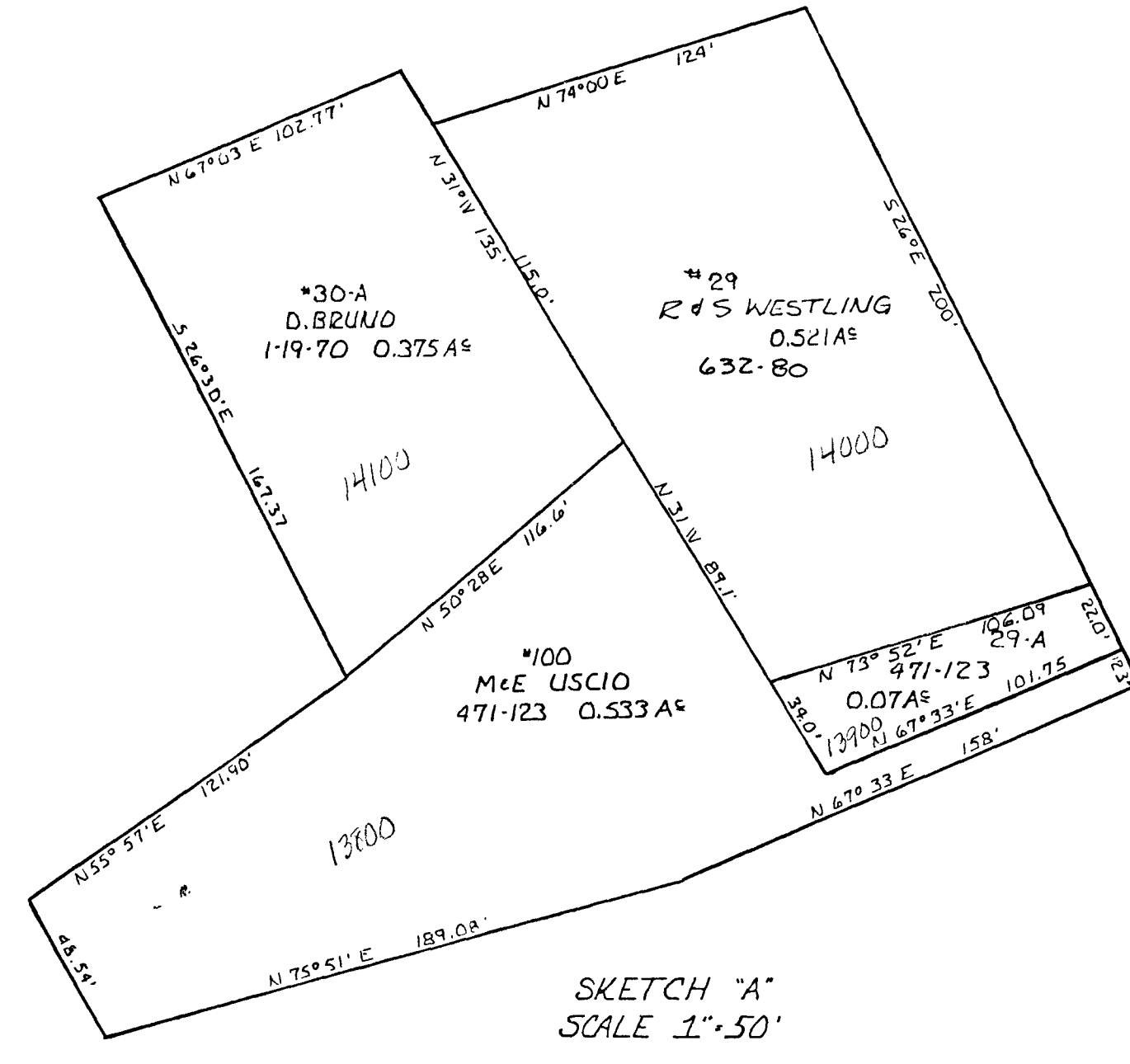
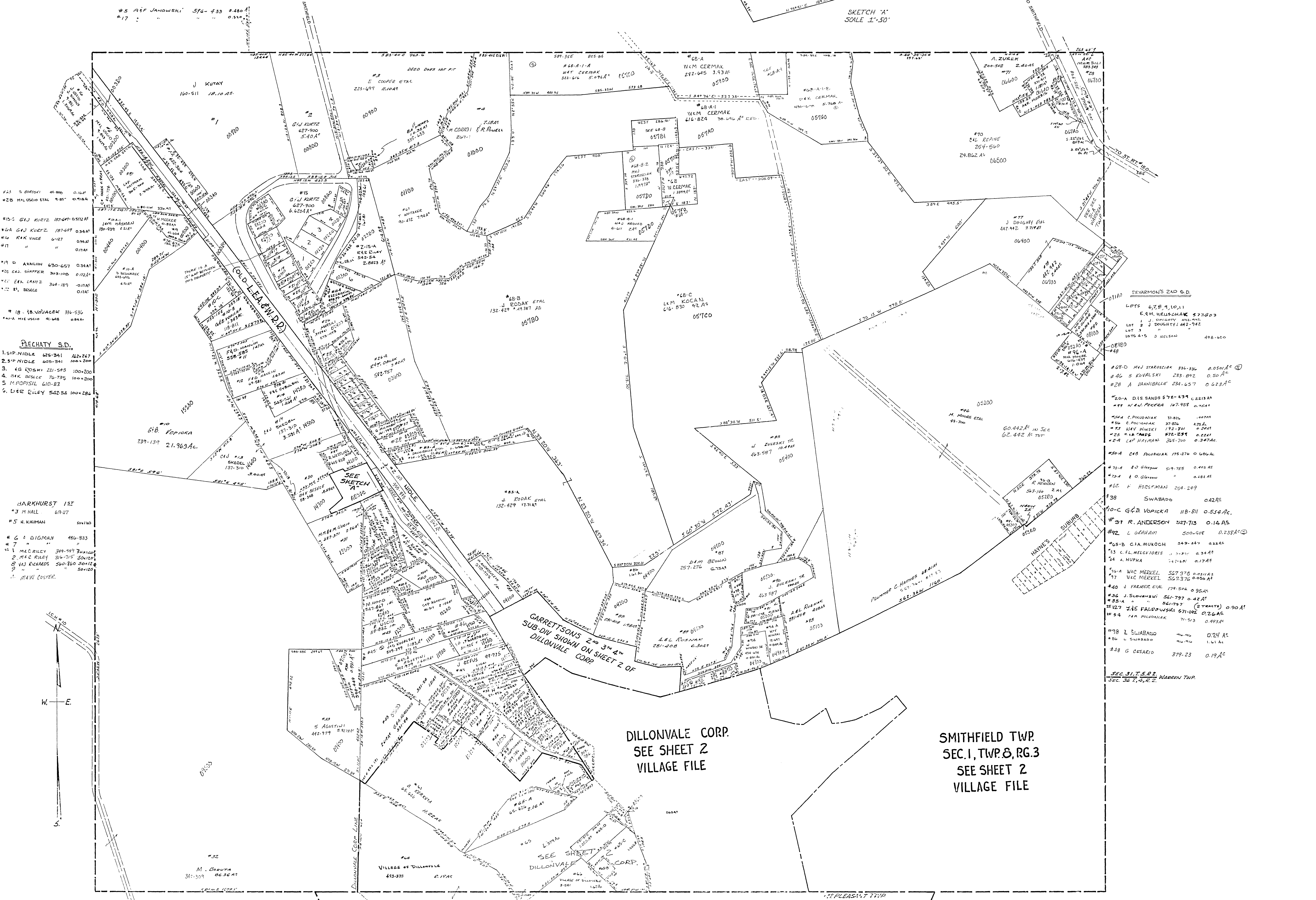


30-0100-



SKETCH 'A'
SCALE 1"=50'



- #23 S. BASKIN 61-186 0.16A
- #28 M. USCIO ETAL 4-85 0.14A
- #10 C. G. J. KURTZ 187-647 0.512A
- #10A G. J. KURTZ 187-647 0.54A
- #10B R. K. VINCE 6-127 0.14A
- #11 " " 0.14A
- #19 D. ANNILON 430-457 0.34A
- #20 C. SHAFER 303-108 0.12A
- #21 E. L. LAMBY 364-185 0.17A
- #22 E. B. BECKE 0.17A
- #18 S. V. V. V. 336-536 0.84A
- #19A M. USCIO 41-648 0.84A

- PLECHATY S.D.**
- 1. S. P. NIDLE 625-841 42-247
 - 2. S. P. NIDLE 625-841 100-204
 - 3. G. G. OSKI 221-543 100-200
 - 4. H. K. BECKE 76-735 100-200
 - 5. H. P. OSKI 610-333
 - 6. D. E. EILEY 542-54 100-286

- BARKHURST 137**
- #3 M. HALL 614-77
 - #5 H. KREMAN 50-130
 - #6 E. DIGMAN 450-833
 - #7 " "
 - #8 L. M. RILEY 249-597 30-120
 - #9 M. C. RILEY 216-715 30-120
 - #10 J. RICHARDS 200-160 30-120
 - #11 " "
 - #12 M. W. COOPER 30-120

- DIVISION'S 2ND G.D.**
- LOTS 6, 7, 8, 9, 10, 11
 - E. M. KRUSZAK 677-803
 - J. DOUGHERTY 442-742
 - LOT 3
 - 10% A. S. NELSON 498-100

- #80 D. M. STROJAN 316-336 0.50A
- #81 S. KVALSKI 233-872 0.50A
- #82 A. SHANNON 234-657 0.623A
- #83 A. DIS SANDS 578-439 1.231A
- #84 M. W. PECKA 167-958 0.70A
- #85 C. PROCHAZKA 31-824 0.77A
- #86 C. PROCHAZKA 37-824 1.75A
- #87 M. W. PECKA 172-301 0.29A
- #88 M. W. PECKA 172-301 0.22A
- #89 L. P. HAYMAN 365-700 0.347A
- #90 A. C. BURMAN 175-276 0.60A
- #91 A. O. GILMAN 519-755 0.405A
- #92 A. O. GILMAN 0.405A
- #93 F. ROSEMAN 254-249
- #94 SWABADO 0.428A
- #95 G. B. VOPIKA 118-811 0.534A
- #96 R. ANDERSON 327-713 0.14 AS
- #97 L. GERMAN 500-508 0.233A
- #98 S. CALMUKOCH 349-447 0.23A
- #99 C. L. MELCHORS 1-1-1 0.24A
- #100 A. HUPKA 1-1-1 0.17A
- #101 W. C. MESSER 327-276 0.24A
- #102 W. C. MESSER 327-276 0.24A
- #103 J. F. HANCOCK 174-546 0.95A
- #104 J. S. HANCOCK 327-797 0.42A
- #105 A. " " 327-797 0.42A
- #106 J. E. FALDOWSKI 671-882 0.90A
- #107 A. H. HANCOCK 71-513 0.495A
- #108 L. SWABADO 0.24 AS
- #109 L. SWABADO 0.24 AS
- #110 G. CESARIO 379-23 0.19A

DILLONVALE CORP.
SEE SHEET 2
VILLAGE FILE

SMITHFIELD TWP.
SEC. 1, TWP. 8, RG. 3
SEE SHEET 2
VILLAGE FILE

SMITHFIELD TWP.
SEC. 1, TWP. 8, RG. 3
SCALE 1"=200'